

# ARK CENTRE

G  
A  
L  
L  
E  
R  
Y



[WWW.ORIGINALASSETS.CO.KE](http://WWW.ORIGINALASSETS.CO.KE)

**ENTRANCE  
DOOR  
TO  
SHOWROOM**



**[WWW.ORIGINALASSETS.CO.KE](http://WWW.ORIGINALASSETS.CO.KE)**



**GROUND FLOOR**

**[WWW.ORIGINALASSETS.CO.KE](http://WWW.ORIGINALASSETS.CO.KE)**

# STAIRCASE TO MEZZANINE





**MEZZANINE FLOOR**

**[WWW.ORIGINALASSETS.CO.KE](http://WWW.ORIGINALASSETS.CO.KE)**



**WASHROOM AREA**

**[WWW.ORIGINALASSETS.CO.KE](http://WWW.ORIGINALASSETS.CO.KE)**



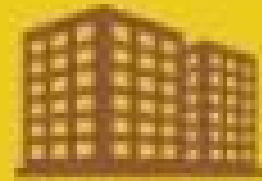
**KITCHEN AREA**



# FULL BACK-UP GENERATOR



 **TO LET**



## **COMMERCIAL SPACE 3**

**Ground Floor Area - 3,160.8 Sqft**

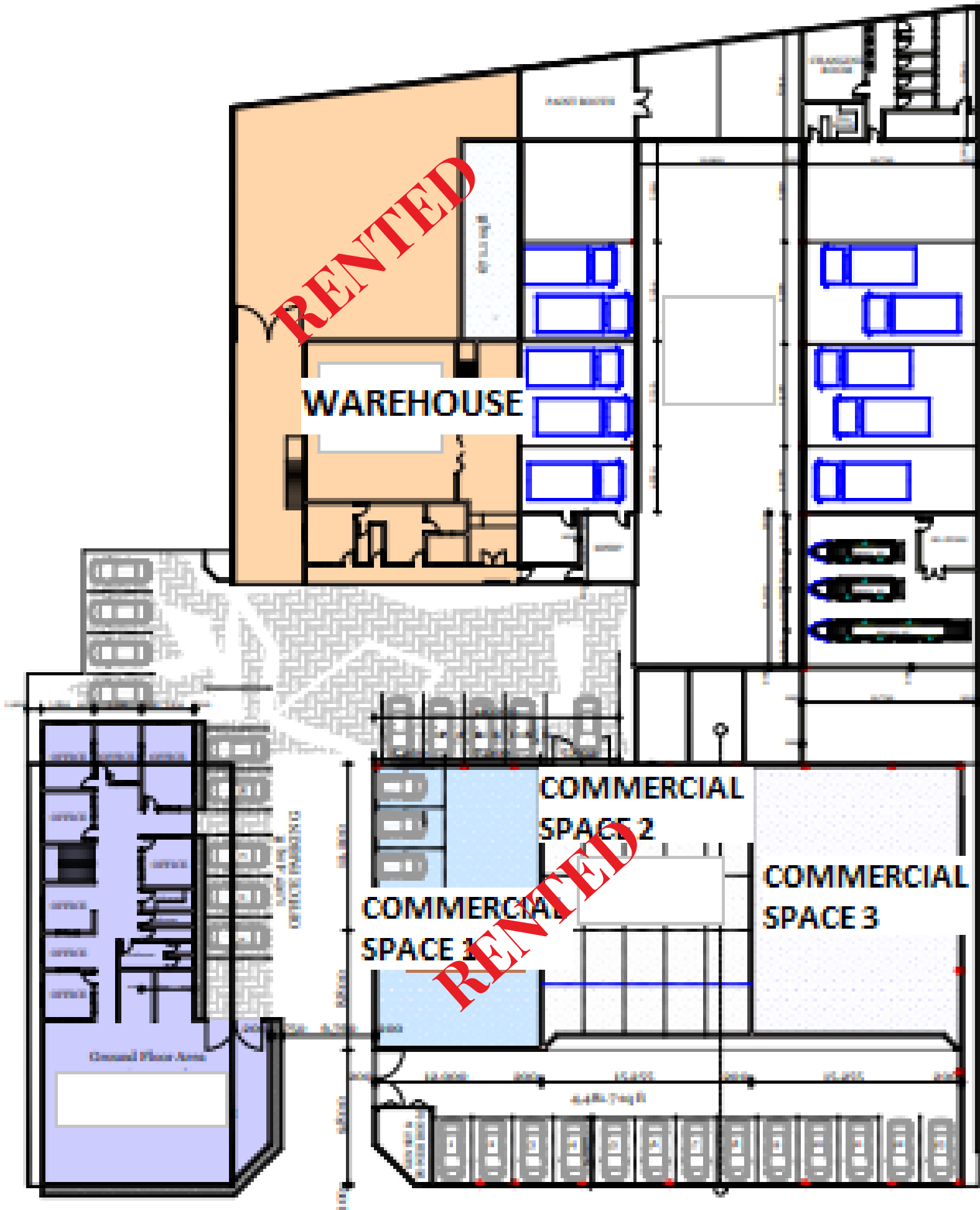
**Mezanine Floor Area - 2,101.5  
Sqft**

**Total - 5,262.3 Sqft**

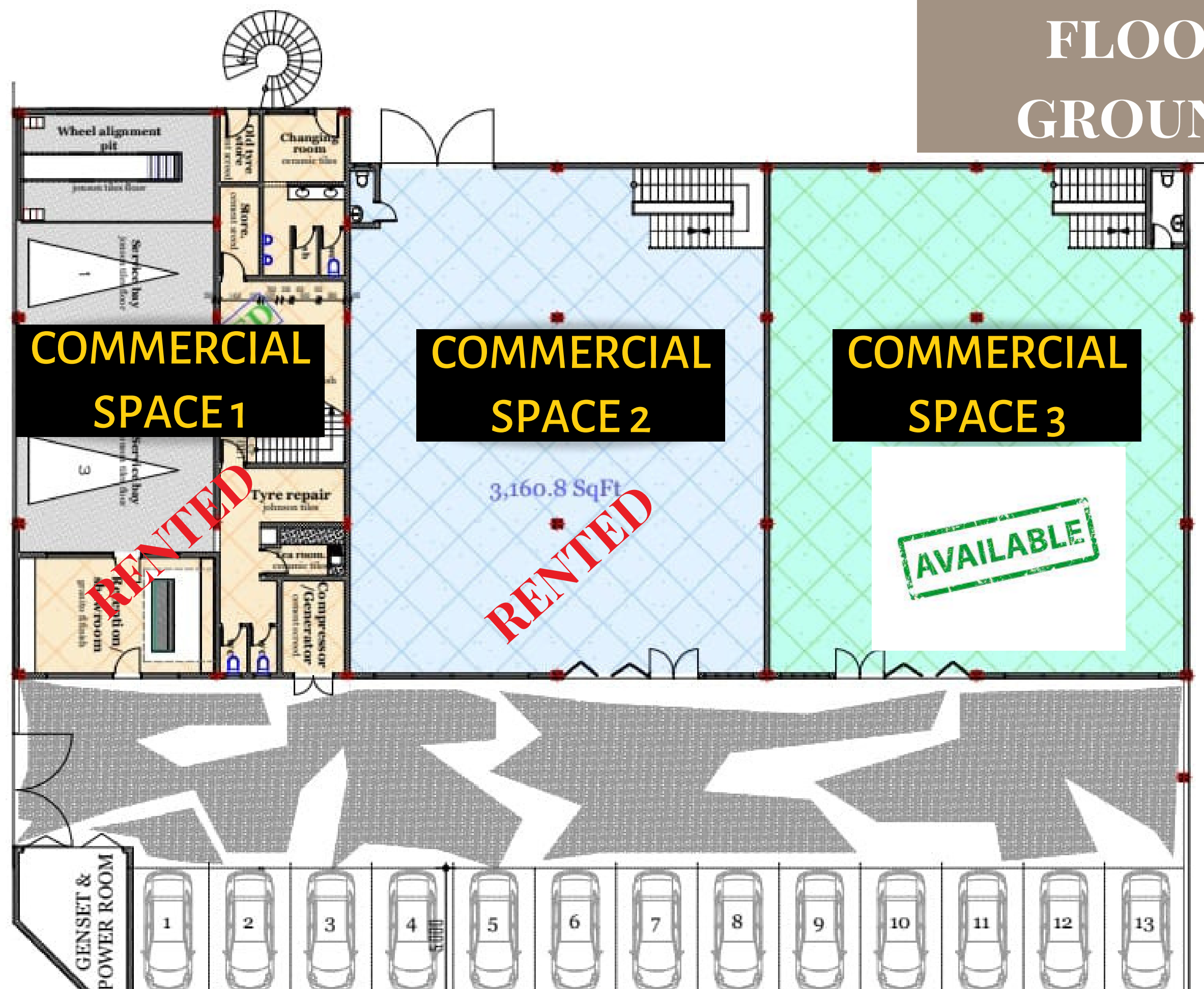
**Rate: 90/- Plus Vat.**

**Rent: Ksh.473,607/= Plus Vat.**

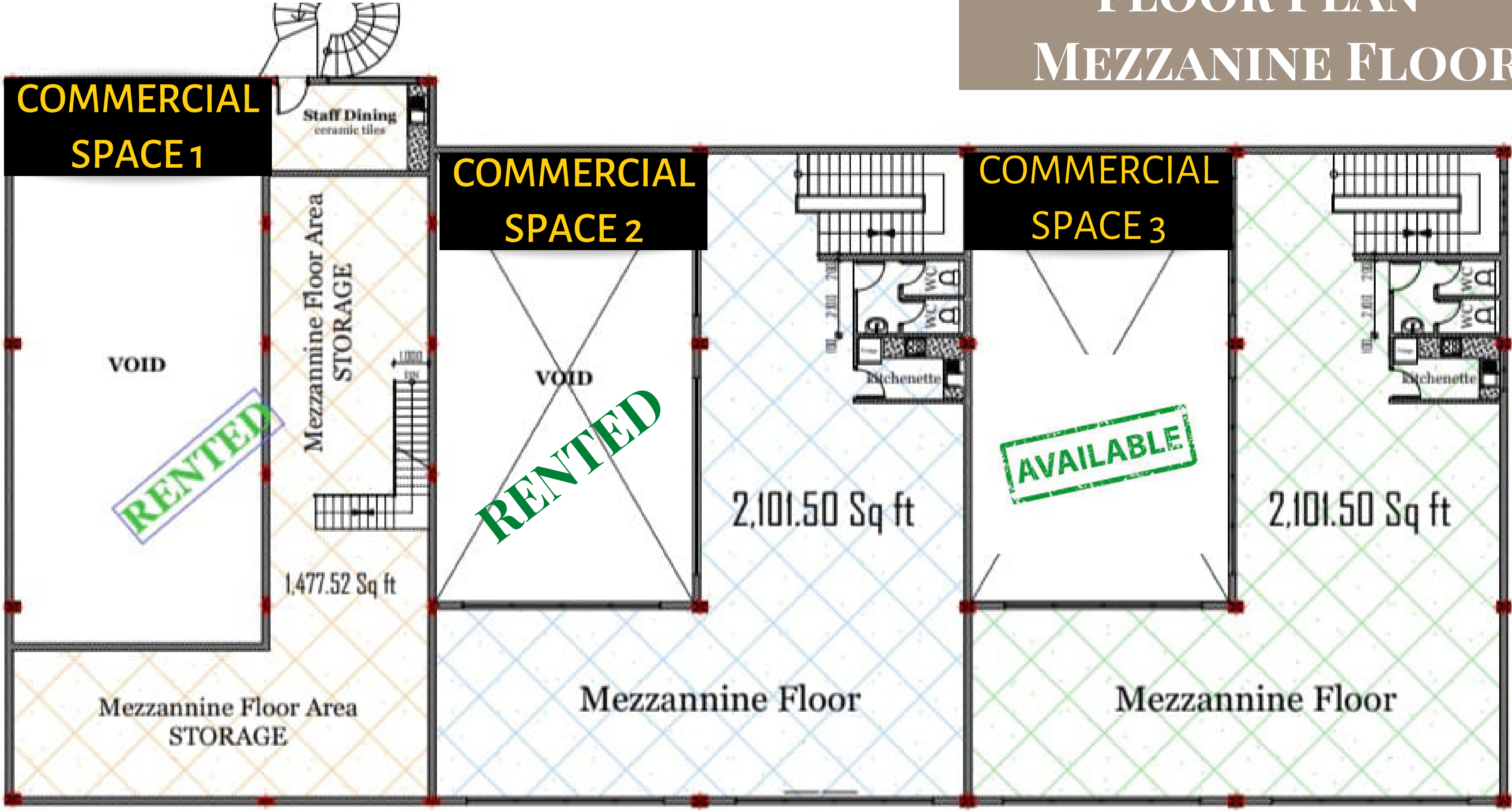
# SITE PLAN



# FLOOR PLAN - GROUND FLOOR



# FLOOR PLAN - MEZZANINE FLOOR



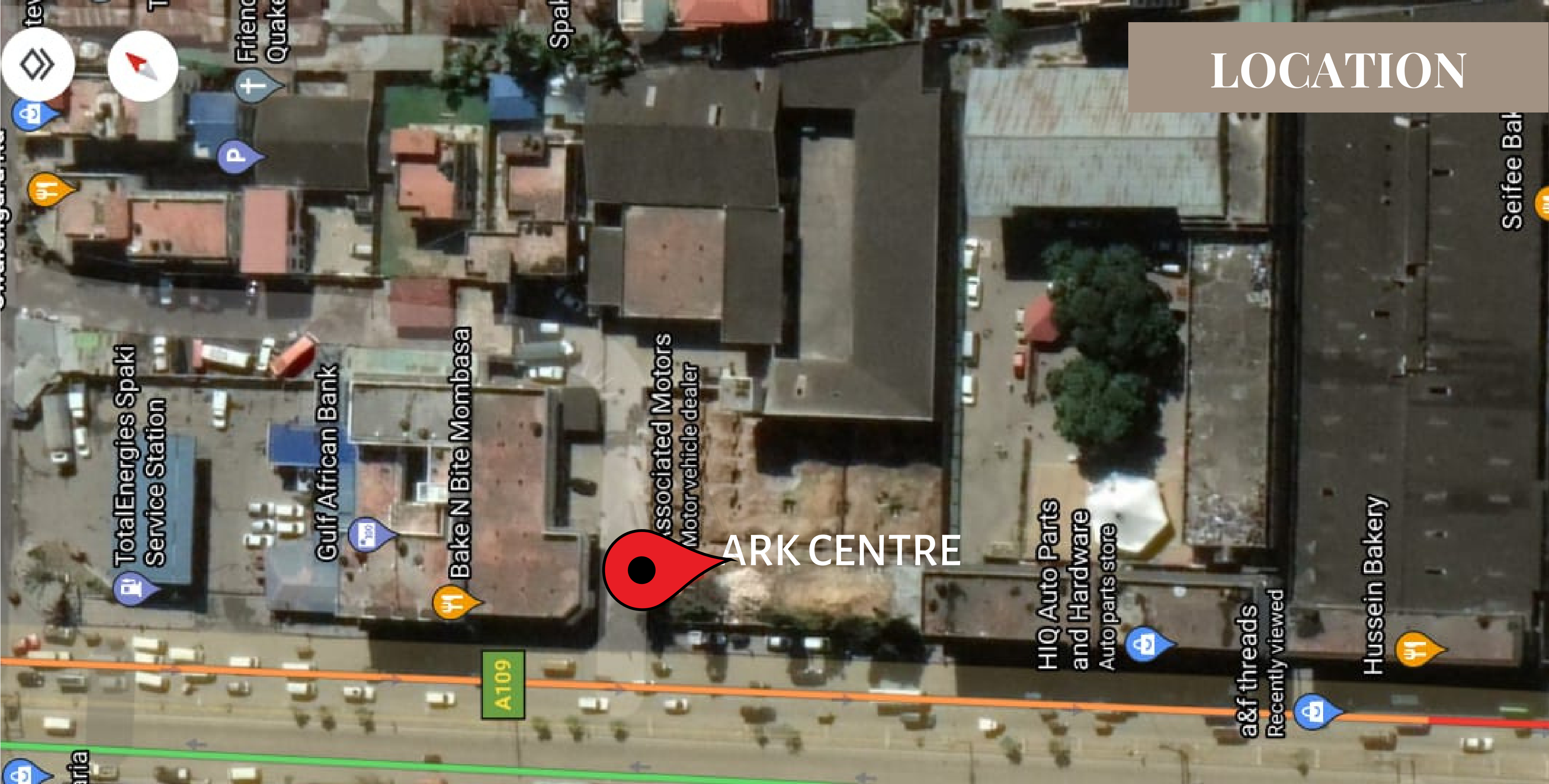
RENDER



REAL

AN  
ORIGINAL  
ASSETS  
PROJECT

[WWW.ORIGINALASSETS.CO.KE](http://WWW.ORIGINALASSETS.CO.KE)



# LOCATION

**ARK CENTRE**



**Q PAYMENT TERMS?**

**A: 2 MONTHS DEPOSIT, 3 MONTHS RENT**

**Q: CAR PARKING?**

**A: 23 VISITORS CAR PARKING SLOTS AVAILABLE**

**Q: GENSET?**

**A: AVAILABLE AT AN EXTRA COST**

**Q: WATER FACILITY?**

**A: BOREHOLE AVAILABLE**

**Q: CONSTRUCTION  
FINISHING DATE?**

**A: MARCH 2022**

**Q: SERVICE CHARGE?**

**A: 25,000/- PLUS VAT**



# ORIGINAL ASSETS

EMAIL:ZAHRA@ORIGINALASSETS.CO.KE

EMAIL:INFO@ORIGINALASSETS.CO.KE

WEBSITE:WWW.ORIGINALASSETS.CO.KE

**BOOK  
NOW**



**+254 799 642 770**



