



AN ORIGINAL ASSETS PROJECT





INTRODUCING...

# Twiga Wood Villas

Twiga Wood Villas is Original Assets latest Project, The Villas Have been meticulously designed to suit the market with the most flexible Amenities, Quality, Elegance, Spacious and reasonable prices.

## Details...

- We are adjacent to the NEW upcoming malls.
- JUST 5 minutes away to cinemax & Only 15 minutes away to City Mall.
- All social amenities are close by. Such as; Beach, Restaurants, Golf, Supermarket, Schools, etc.
- We neighbour Petrol Stations, Hospitals.









**TYPE A**

*Mara Villas*

**4 Bedroom Plus DSQ**

**225 Sqm (2,500 Sqft)**





# Mara Villas

4 BEDROOMS



Ground Floor



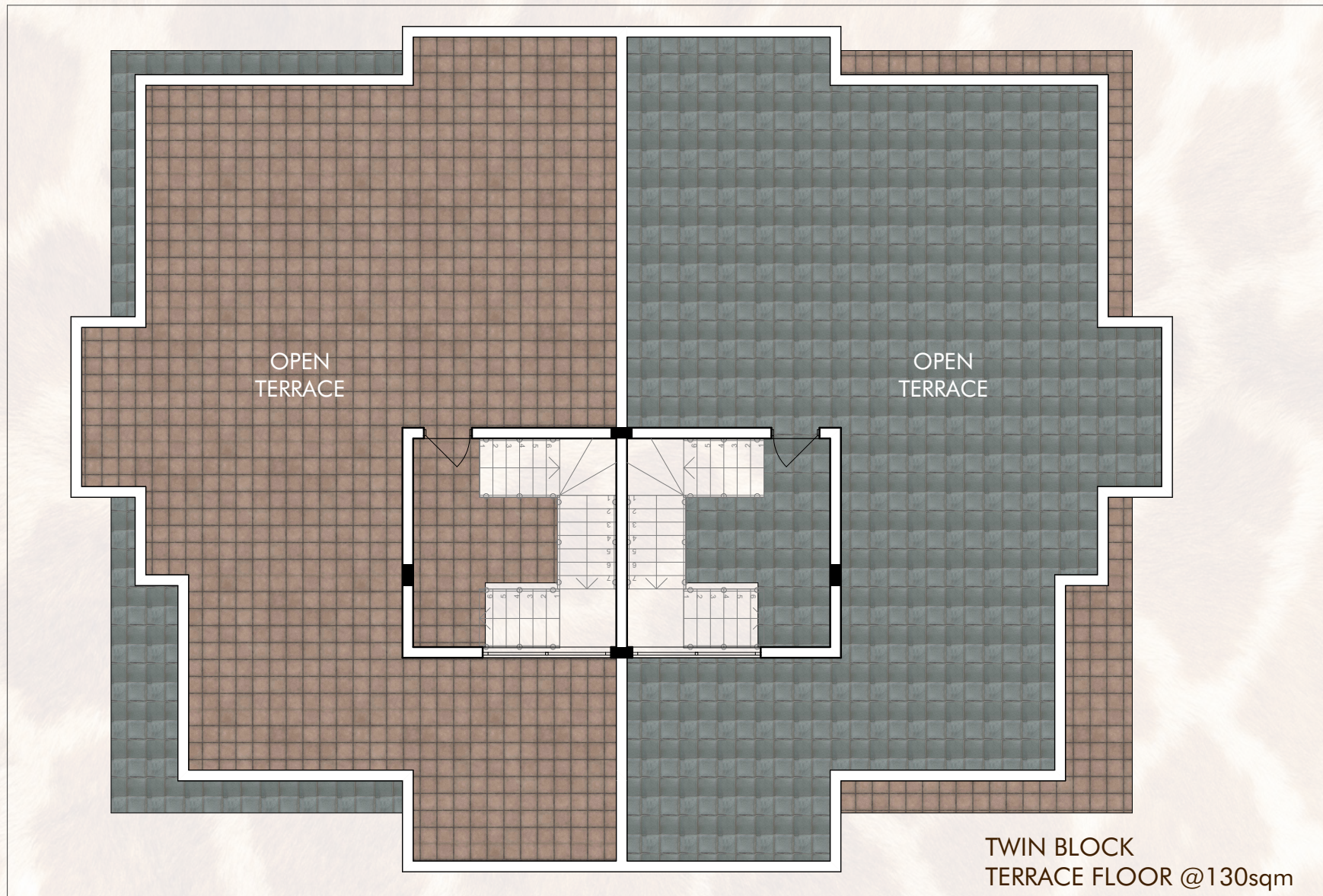
# Mara Villas



First Floor



# Mara Villas



Rooftop



Luxury Redefined

# Serengeti Villas

Located in a peaceful and serene neighborhood, this property offers the ultimate in privacy and luxury living.

Don't miss this once-in-a-lifetime opportunity to own this incredible piece of real estate.







**TYPE B**

# *Serengeti Villas*

**5 Bedroom Plus DSQ**

**382 Sqm (4,000 Sqft)**







Welcome to Villa Elysium, where luxury meets serenity. Indulge in the ultimate escape and create unforgettable memories !



# Serengeti villas

5 BEDROOMS PLUS DSQ



TWIGA  
BLOCK 'B' = 157sqm  
SQ = 24 sqm  
GROUND FLOOR

Ground Floor



# Serengeti villas

5 BEDROOMS PLUS DSQ



First Floor



# Serengeti villas

5 BEDROOMS PLUS DSQ



TWIGA  
BLOCK 'B' = 44sqm  
TERRACE = 113 sqm  
SECOND FLOOR - Steve

Rooftop



# GROUND FLOOR

## VILLA FEATURES

AMENITIES ARE THE SAME FOR BOTH 4 & 5 BEDROOM VILLAS

- 
- 1 bedrooms - all ensuite
  - Balconies to all rooms
  - Walk-in wardrobes
  - Spacious Foyer at the entrance
  - Separate laundry area
  - Cloths drying facility
  - A self-contained DSQ with an ensuite.
  - Common wash basin designed
  - Extra guest cloak room
  - Spacious lounge with 7 seating designed dining table
  - Spacious 5FT wide balcony
  - Planter box next to balcony
  - Spacious American/open plan kitchen
    - Cooker smoke hood
    - Kitchen cabinets fitted
    - Double drain/double bowl kitchen sink with large work top
    - Adjoining well ventilated pantry
    - Kitchen utility area with extra concrete sink
    - Hot Water Heat Pump System
    - Prepaid Electrical Token System
    - Fitted breakfast table – 6/7-seater (Optional)
  - 3 car parking slots for each unit
  - Visitors parking for each villa



## FIRST FLOOR

### Villa Features

- Spacious & well-lit staircase
- 3 bedrooms - all ensuite
- Balconies to all rooms
- Walk-in wardrobes

## TOP FLOOR

### Villa Features

- Overhead Water tanks
- Solar system
- RO Plant

## GENERAL

### Villa Finishes

- Stylish & Modern Fit-out Wardrobes
- Modern tile finishing
- Mvule doors
- Trendy electrical switches

Masterfully Designed with...

*Space, Form and Elegance...*





LUXURIOUS  
LIVING



COMFORT &  
EASE



DINING IN  
STYLE



ELEGANCE &  
STYLE





DARE TO  
DREAM



LUXURY  
SIMPLIFIED



A NOD TO  
COMFORT



A NOD TO  
NATURE





MINIMAL  
DESIGN



INSPIRED  
DESIGN



FANCY A  
BATH?



INTERIOR COLOR  
HARMONY





*All amenities are carefully considered for family.*





# Lifestyle

- Adults Swimming Pool
- 
- Baby Swimming Pool
- 
- Changing Rooms
- 
- Club House
- 
- Children's Play Area
- 
- Jogging Track/Cycling
- 
- Well maintained garden
- 
- Gym/Yoga Room



The background image shows a modern, two-story house with a white facade and dark grey accents. It has large windows and a balcony. In front of the house is a swimming pool with a blue interior and a white tiled deck. A white convertible car is parked on the street in the foreground. The scene is set in a lush, green environment with palm trees and other vegetation. A semi-transparent white box on the right side of the image contains text about amenities.

## OTHER Amenities

Generator back-up  
(common areas only)

•

Zen Gardens

•

CCTV control room

•

Fire fighting system

•

Perimeter wall with  
electric fence

•

24 Hours Excellent  
Security



# Villas Details

TOTAL : 10 UNITS

## MARA VILLAS

4 BR - 8 UNITS

2,700 SQFT

Plot area: 3,100 sqft

SEMI-DETACHED

## SERENGETI VILLAS

5 BR - 2 UNITS

4,300 SQFT

Plot area: 4,425 sqft

STAND-ALONE





# Project Timelines



GROUND BREAKING DATE

**AUGUST 2023**



COMPLETION

**18 -20 Months**



AN ORIGINAL ASSETS PROJECT



TWIGA ROAD, NYALI, MOMBASA.



We are adjacent to the NEW upcoming malls.

JUST 5 minutes away to cinemax &

Only 15 minutes away to City Mall.

All social amenities are close by. Such as;  
Beach, Restaurants, Golf, Supermarket,  
Schools, etc.

We neighbour Petrol Stations, Hospitals.

The Internal Renders are an Imaginary  
idea of how it can be set up  
(Not Included in price)

The external renders are near to the  
same as of what the developer will  
achieve



[zahra@originalasset.co.ke](mailto:zahra@originalasset.co.ke)



0799 642770



[www.originalassets.co.ke](http://www.originalassets.co.ke)